A white rectangular box is centered on a teal background. Inside the box, the text "Not all classrooms have four walls" is written in a black, hand-drawn, chalk-like font. The text is arranged in two lines: "Not all classrooms" on the top line and "have four walls" on the bottom line.

Not all classrooms
have four walls

Come Study Abroad



MTSU Signature Program May 2018

Amsterdam

London

Vienna



3 European Cities in 11 Days
History and Systems of Psychology

History and Systems of Psychology
3 Credit Hours; PSY 4700
Discovering Psychology's European Roots
Taught by Dr. Seth Marshall
All majors welcome



May 14 - May 24





Vienna, Austria



Vienna Kärntner Straße



Vienna
Stephen's Cathedral



Vienna
Schönbrunn Palace



Vienna
Explore Psychology's Roots



Vienna Excursions

- Vienna State Opera House
- Walking tour of Vienna
- Vienna State Opera House
- Kärntner Strasse, Vienna's most famous shopping street
- Stephen's Cathedral, where Mozart was married
- Viktor Frankl Institute Museum
- Ringstrasse, a world heritage site
- The Parliament, Rathaus (City Hall), and the Hofburg, where the Habsburg dynasty prevailed
- Schönbrunn Palace, where Marie Antoinette spent her childhood
- Sigmund Freud Museum, where psychoanalysis was developed
- The Sigmund Freud walking tour of his patients' homes
- Vienna Psychoanalytic Ambulatorium, which served as Freud's free clinic

Vienna to London





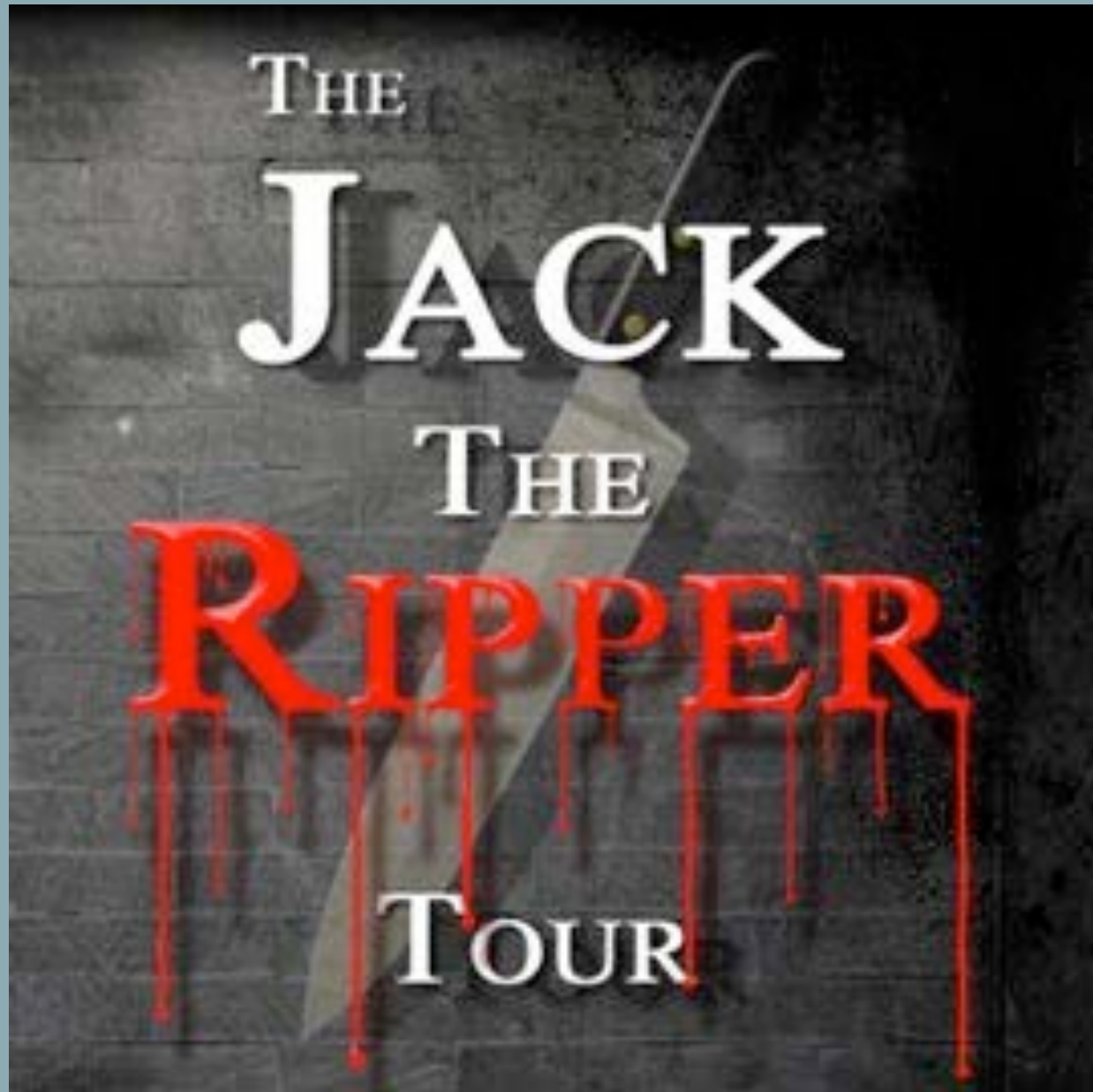
London, England



London Picadilly Circus



London



London
St. Paul's Cathedral



England
Charles Darwin's House in
Kent



London Hyde Park



England
Bethlem Royal Hospital in
Beckenham



London Excursions

- Big Ben and Houses of Parliament
- St. Paul's Cathedral
- Piccadilly Circus
- Hyde Park
- Wellcome Collection, a museum dedicated to the connections between medicine, life, and art.
- Jack the Ripper-themed tour
- Country side of Kent and Charles Darwin's house where he conceived of natural selection and evolution
- Bethlem Royal Hospital in Beckenham, the first institution for mental health in the history of Europe
- Free time for students to explore

London to Amsterdam

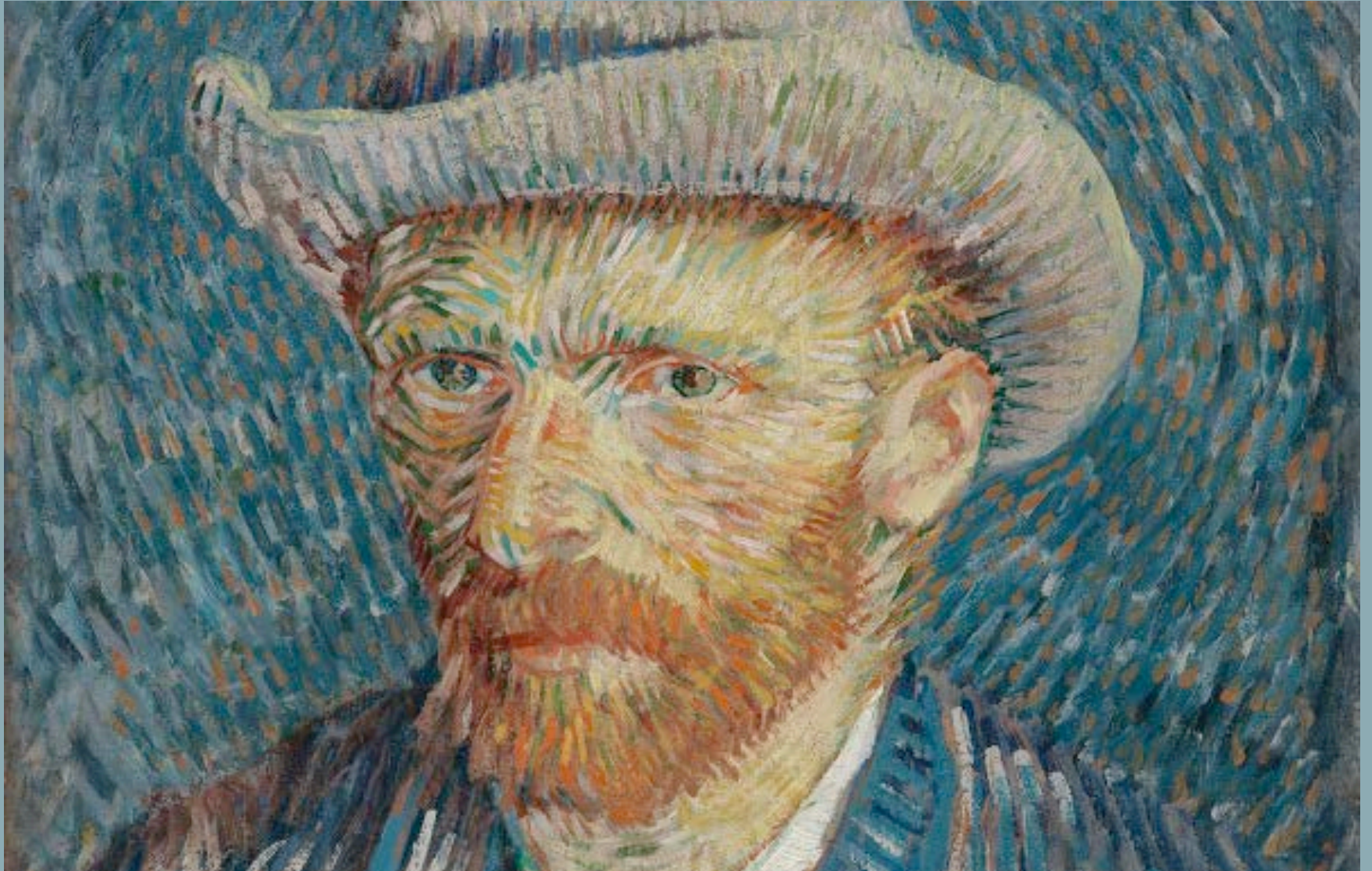




Amsterdam, the Netherlands



Amsterdam
Van Gogh Museum



Canals of Amsterdam



Amsterdam

Anne Frank House



Amsterdam
Holland's Flower Markets



Amsterdam Excursions

- High speed train to Amsterdam
- Walking tour of city square of Waterlooplein
- Amsterdam Canals
- Van Gogh Museum
- Anne Frank House
- Westerkerk (West Church), where Rembrandt is buried
- Amsterdam's Flower markets
- Koninklijk Paleis (Royal Palace), once the home of the Dutch Royal Family
- Rembrandtplein
- Free time for students to explore

May 14 - May 24



\$3,924

- All travel
 - Airfare
 - Trains
 - Busses
- Quality hotels
- Over 40 daily excursions
- Guides
- Emergency support
- Daily breakfast and selected dinners
- \$890 MTSU tuition, fees, and insurance

- 2 options for how to enroll for Dr. Marshall's study abroad course:
- **Option 1: Online**
 - Visit [EFCST.COM/2036312MK](https://efcst.com/2036312MK)
 - Click "Enroll Now" or scroll to the bottom and click "Lock in this Price"
 - Follow next steps and input your personal information, contact details, payment, etc.
 - At enrollment you pay a \$95 initial deposit and choose which payment plan you want moving forward.
- **Option 2: By Phone**
 - Call EF's Traveler Support at 877-485-4184 between 9 AM - 5:30 PM EST Monday - Friday
 - An EF Traveler Support Specialist (TSS) will enroll you in the program over the phone. Make sure to have a debit card or your banking account and routing number on hand. Your Passport, too, if you have it!
 - At enrollment you pay a \$95 initial deposit and choose a payment plan, or work with a Traveler Support Specialist to come up with a customized payment plan.

The course will cap at
around 10 students.

Reserve your spot
early by enrolling online:

EFCST.COM/2036312MK

Scholarships and financial aid available

- Visit the MTSU Office of Education Abroad
- Peck Hall, Office 207
 - 615-898-5179

More information and questions

Contact:

- Dr. Seth Marshall
- seth.marshall@mtsu.edu
- (615) 898-2581
- Jones Hall, office 215